

ELECTRO-PROPORTIONAL
SELF LEVELLING CONTROL VALVE

KPES

series

The KPES series is ideally suited for use in self levelling control of farm implements of tractors and combines. This valve ensures smooth motion of an implement by means of proportional solenoid control.



KPES series

ADVANTAGES

Superb Controllability

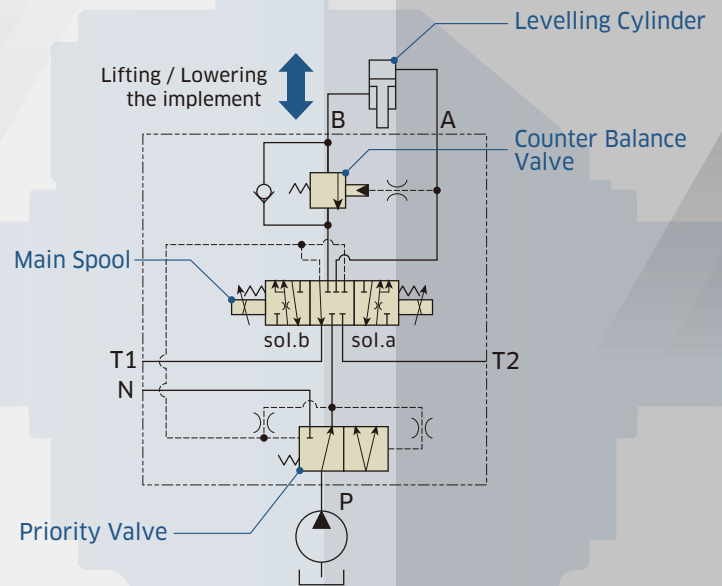
KPES valve controls implement inclination and keeps a farm implement level by means of proportional solenoid control with the integrated pressure compensating function.

The integrated counter balance valve with minimal oil leakage enables to keep an implement in position.

Compact Design

Direct solenoid-operated spool valve realizes size and weight reduction.

Hydraulic Circuit for KPES

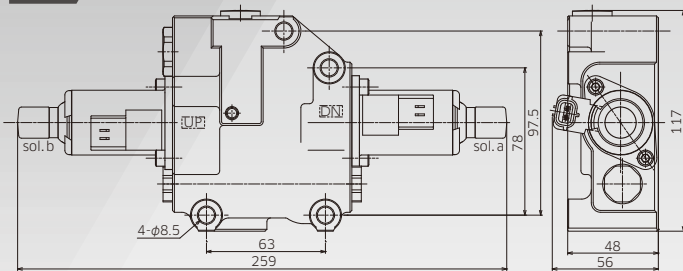


DIMENSIONS

Installation Dimensions

KPES6

Unit: mm



LINEUP



Model		KPES6
Max Pressure [MPa]		17.2
Rated Flow [L/min]	P port	70
	Lowering & Lifting	10

CONTROL OPTIONS

•Electronic Proportional Control

Rated Current: 1.6 A Coil Resistance: 3.3 Ω (at 20 °C)

Specifications are subject to change without notice.

Kawasaki Heavy Industries, Ltd.

Precision Machinery Company
<http://www.khi.co.jp/kpm/>

Tokyo Head Office

1-14-5, Kaigan, Minato-ku, Tokyo 105-8315, Japan
 Tel: +81-3-3435-6862 Fax: +81-3-3435-2023

Kobe Head Office

Kobe Crystal Tower, 1-3 Higashikawasaki-cho 1-chome, Chuo-ku, Kobe 650-8680, Japan
 Tel: +81-78-360-8607 Fax: +81-78-360-8609

Nishi-kobe Works

234, Matsumoto, Hasetani-cho, Nishi-ku, Kobe 651-2239, Japan
 Tel: +81-78-991-1160 Fax: +81-78-991-3186

Kawasaki Precision Machinery (UK) Ltd.

Ernesettle Lane, Ernesettle, Plymouth, Devon, PL5 2SA United Kingdom
 Tel: +44-1752-364394 Fax: +44-1752-364816
<http://www.kpm-eu.com>

Kawasaki Precision Machinery (U.S.A.), Inc.

3838 Broadmoor Avenue S.E. Grand Rapids, Michigan 49512, U.S.A.
 Tel: +1-616-975-3100 Fax: +1-616-975-3103
<http://www.kpm-usa.com>

Kawasaki Precision Machinery Trading (Shanghai) Co., Ltd.

17th Floor (Room 1701), The Headquarters Building, No168, XiZang Road (M), Huangpu District, Shanghai, 200001, China
 Tel: +86-21-3366-3800 Fax: +86-21-3366-3808

Flutek, Ltd.

98 GIL 6, Gongdan-Ro, Seongsan-Ku, Changwon-Si, Kyungnam, 641-370, Korea
 Tel: +82-55-210-5900 Fax: +82-55-286-5557

Wipro Kawasaki Precision Machinery Private Limited

No. 15, Sy. No. 35 & 37, Kumbalgodu Industrial Area, Kumbalgodu Village, Kengeri Hobli, Bangalore, -560074, India



QR code
 Precision Machinery
 Company Website