

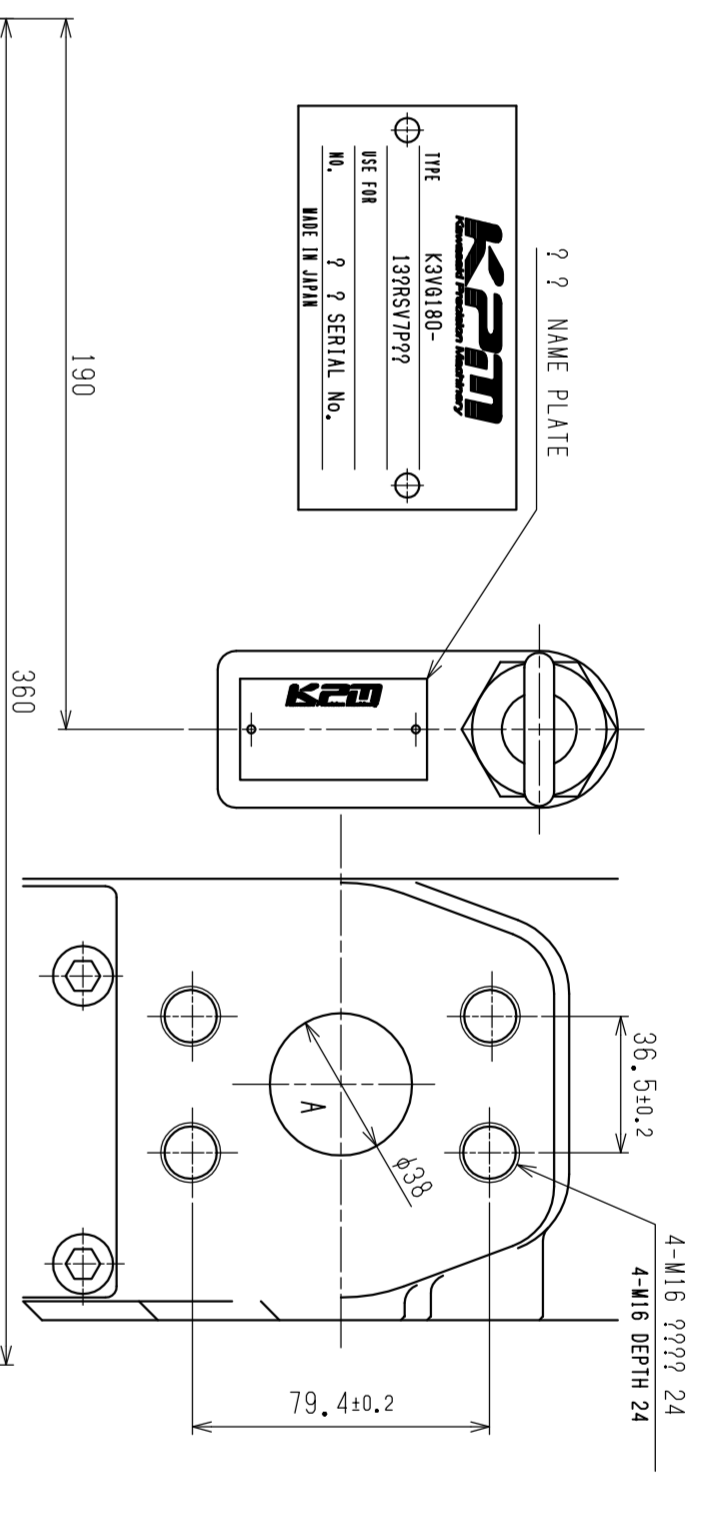
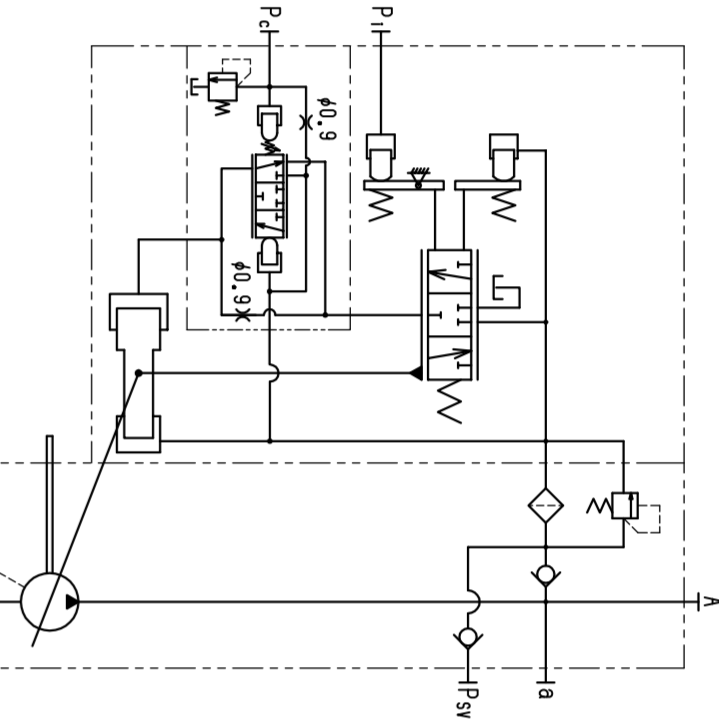
PORT NAME	PORT SIZE	ON DELIVERY	MAX. TIGHTENING TORQUE
A	SAE 800Dpsi 1 1/2"	COVERED WITH TAP	240
B	SAE 200Dpsi 3/4"	COVERED WITH TAP	240
D1	3/4-15	COVERED WITH TAP	170
D2	3/4-15	COVERED WITH TAP	170
Pa	3/4-15	COVERED WITH TAP	38
Pb	3/4-15	COVERED WITH TAP	38
Pc	3/4-15	COVERED WITH TAP	38
Pd	3/4-15	COVERED WITH TAP	38
Ps	3/4-15	COVERED WITH TAP	38
Pt	3/4-15	COVERED WITH TAP	38
Pv	3/4-15	COVERED WITH TAP	38
Pw	3/4-15	COVERED WITH TAP	38
Px	3/4-15	COVERED WITH TAP	38
Pz	3/4-15	COVERED WITH TAP	38

OPERATING SPECIFICATIONS

- (1) 0.1 MPa
- (2) 0.1 MPa
- (3) 0.1 MPa
- (4) 0.1 MPa
- (5) 0.1 MPa
- (6) 0.1 MPa
- (7) 0.1 MPa
- (8) 0.1 MPa
- (9) 0.1 MPa
- (10) 0.1 MPa

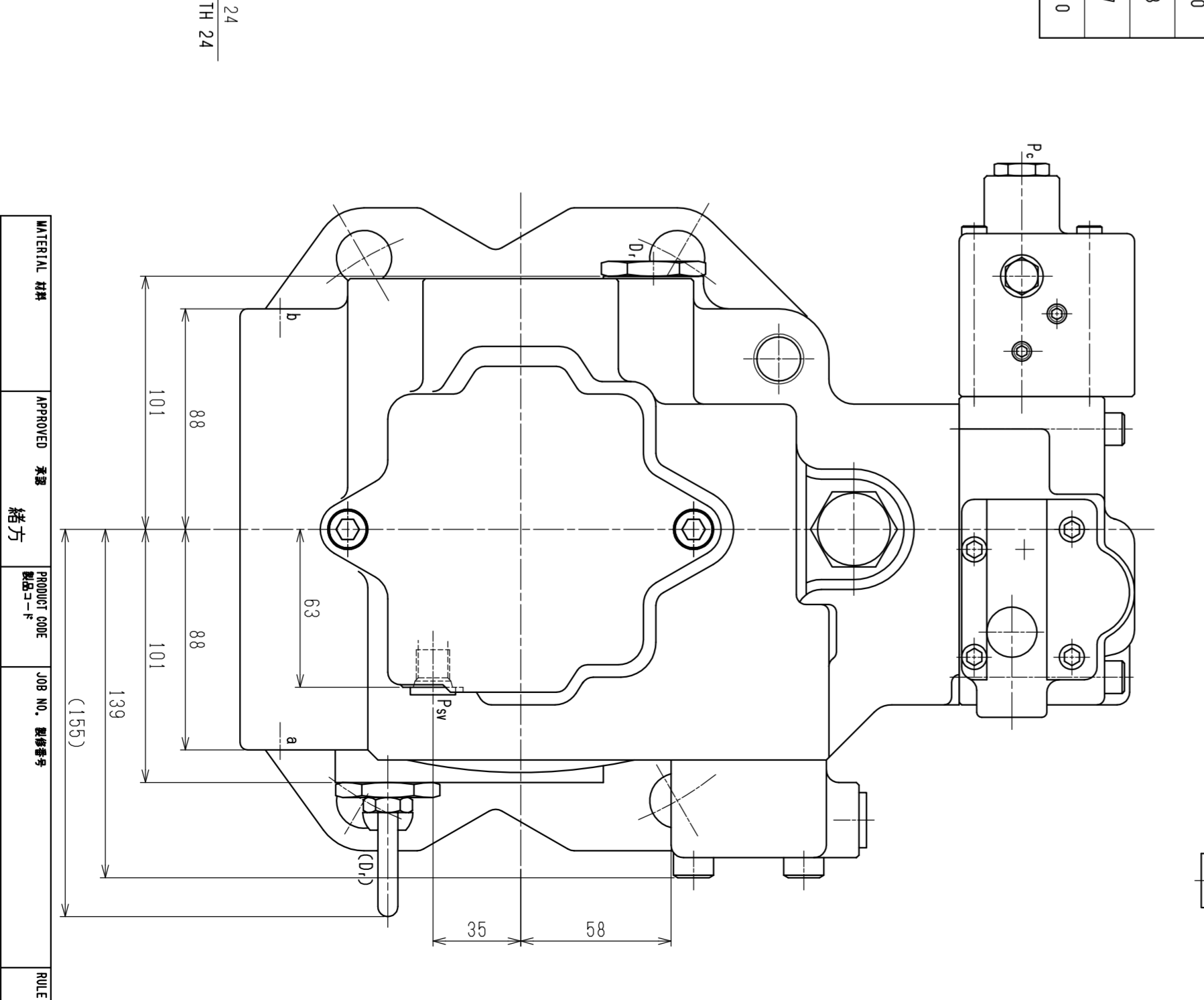
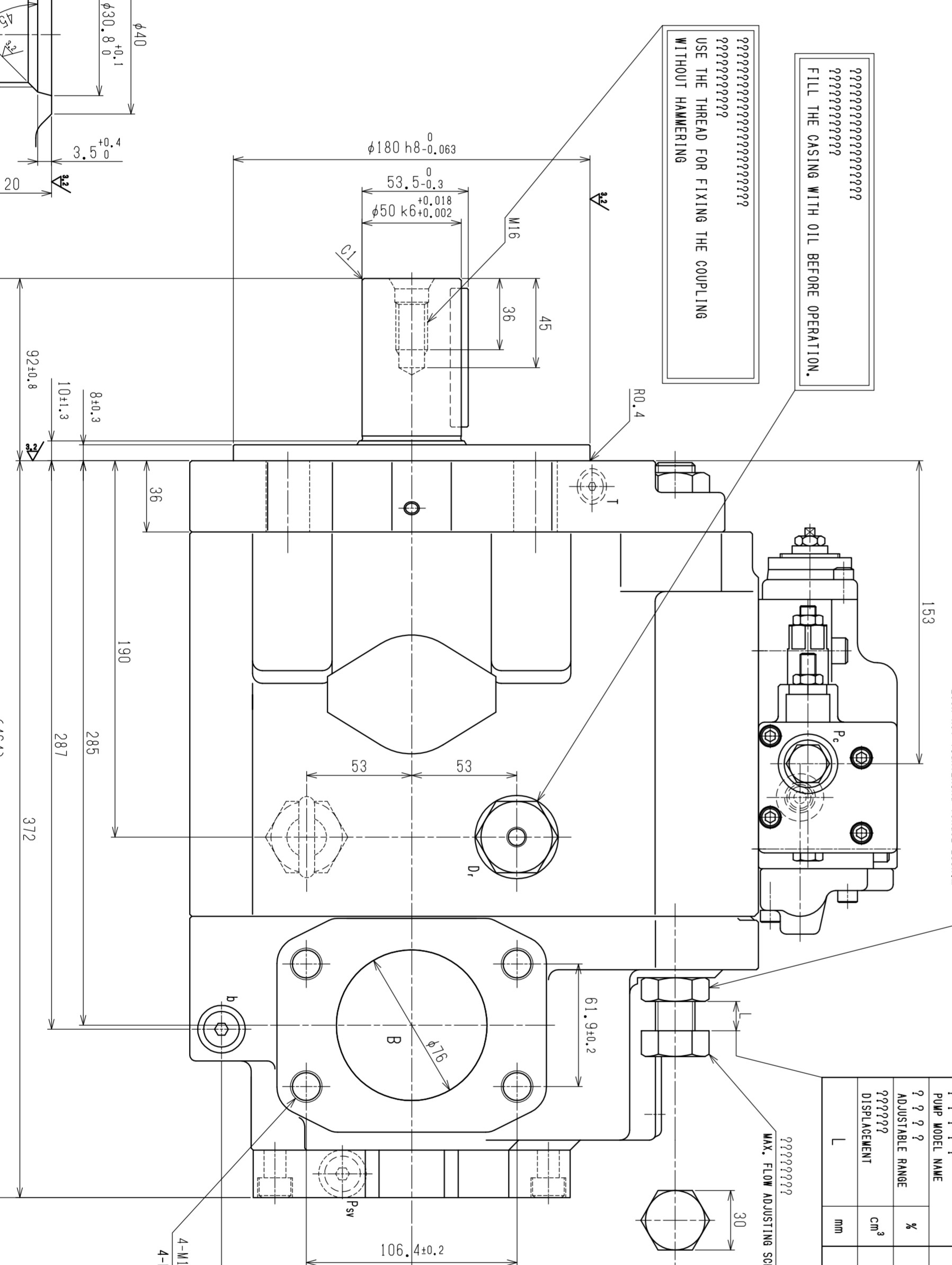
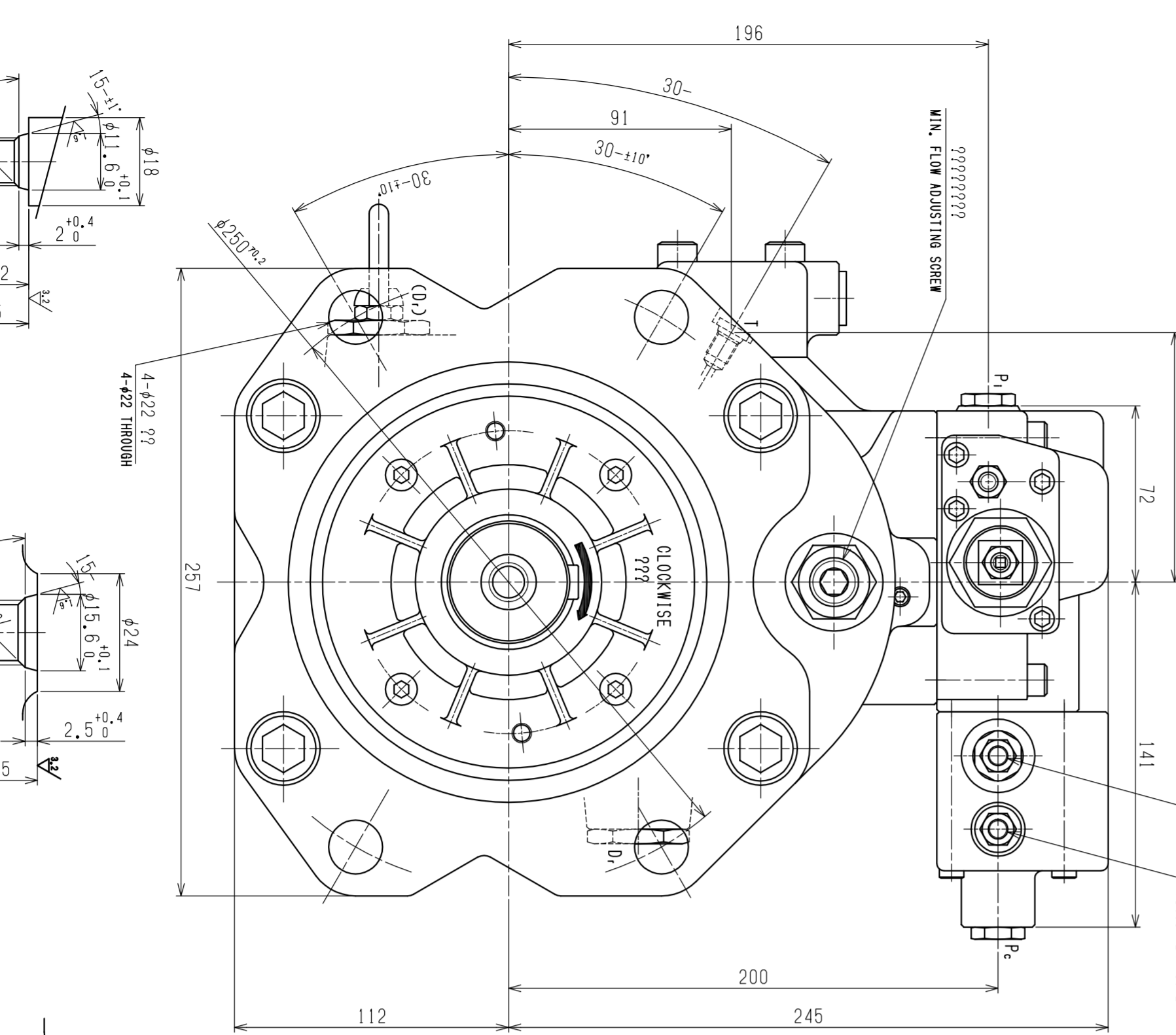
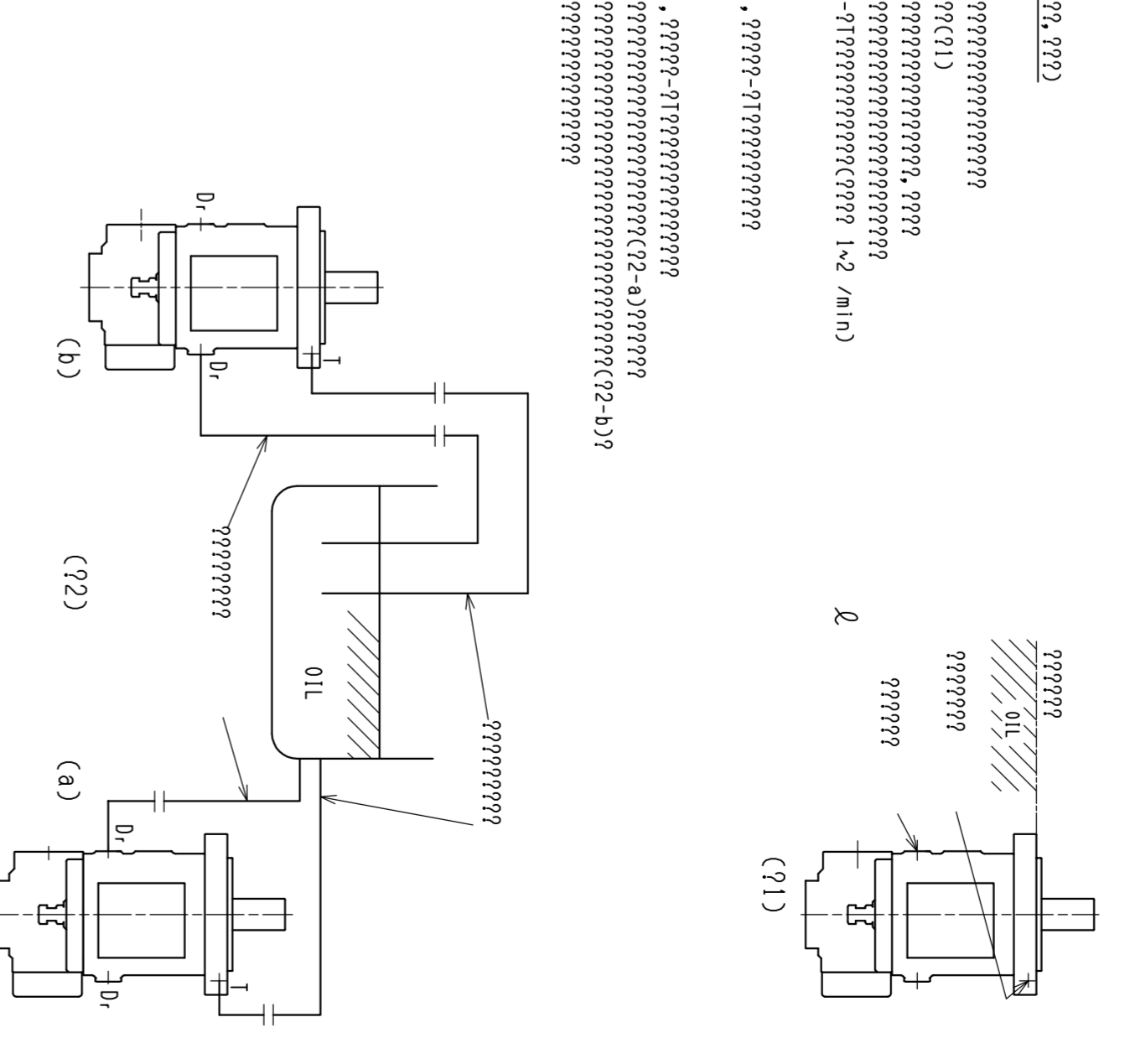
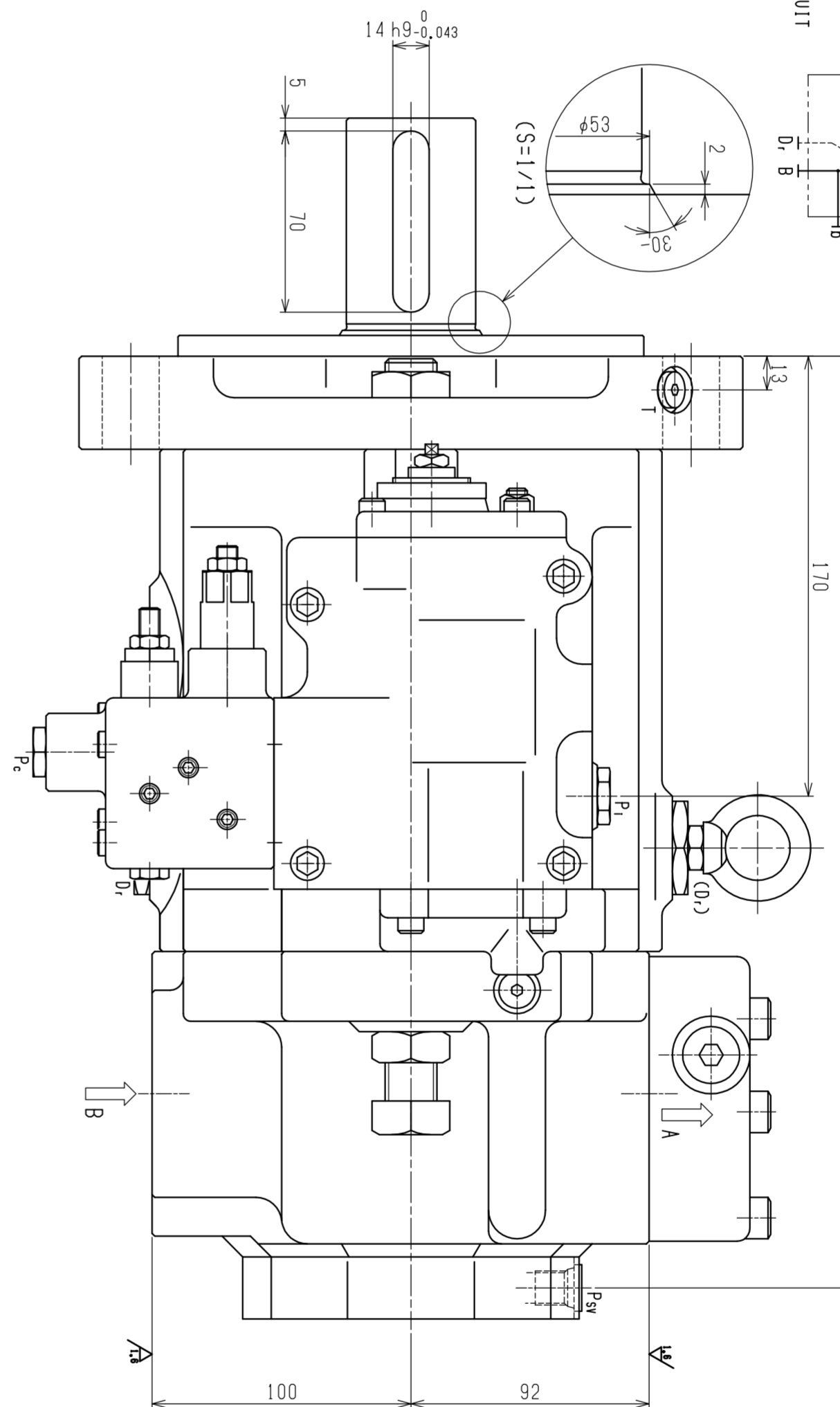
NOTES ON MOUNTING AND OPERATION

- (1) THE PUMP SHAFT AND FLANGE SURFACES SHOULD BE CLEANED.
- (2) FOR REMOVING AN ANTI-RUST MATERIAL (FOR REMOVING AN ANTI-RUST MATERIAL).
- (3) KEEP THE CASING PRESSURE BELOW 0.1 MPa NORMALLY, AND BELOW 0.4 MPa AT ITS PEAK.
- (4) BE CAREFUL SO THAT THE DRAIN PIPING LED INTO THE OILTANK IS KEPT BELOW THE SURFACE OF THE OIL (TO PREVENT AIRRATION).
- (5) BE CAREFUL SO THAT THE SUCTION PRESSURE IN THE SUCTION FLANGE IS KEPT ABOVE -0.01 MPa NORMALLY.
- (6) MINERAL ANTIWEAR TYPE HYDRAULIC OIL SHOULD BE USED.
- (7) FOR SATISFACTORY SERVICE LIFE OF THE PUMP IN APPLICATION, THE OPERATING FLUID SHOULD BE CONTINUOUSLY FILTERED TO A MINIMUM CLEANLINESS LEVEL OF NAS1638 CLASS 9.
- (8) PROVIDE A 150 MESH (100µm) STRAINER IN THE SUCTION LINE.
- (9) INSTALL A 10µm FILTER IN THE RETURN LINE.
- (10) ALLOWABLE OIL TEMPERATURE RANGE : -20~80°C



OPERATING SPECIFICATIONS	VALUE
DISPLACEMENT	180
RATED SPEED	1800 (CLOCKWISE VIEW) FROM SHAFT END
MAX. PRESSURE	34.3
MAX. FLOW RATE	324
PUMP MODEL NAME	K3V0180-13RSV7P22

ITEM NO.	DESCRIPTION
1	DISPLACEMENT
2	RATED SPEED
3	MAX. PRESSURE
4	MAX. FLOW RATE
5	PUMP MODEL NAME



DETAIL OF T PORTS

DETAIL OF D1 PORTS

DETAIL OF D2 PORTS